

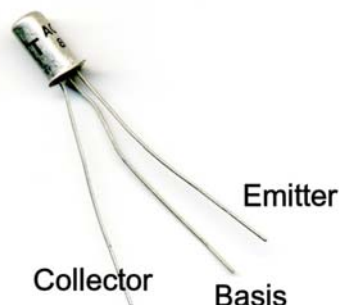
UK-electronic ©2007/13

Manual for Kit Treble Booster

Page 2.....	Bill of material
Page 3.....	Soldering the pcb
Page 4.....	Wiring diagram (picture)
Page 5..8.....	Layout, soldering, wiring, schematic

Important connection of any components

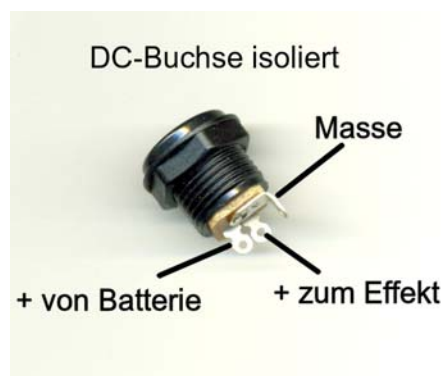
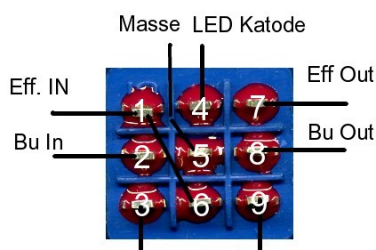
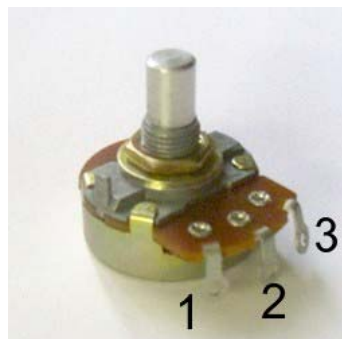
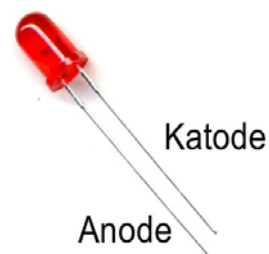
Bei vielen Transistoren ist der Kollektor mit eine, Farbpunkt gekennzeichnet



2N3904
2N3906



Leuchtdiode (LED)

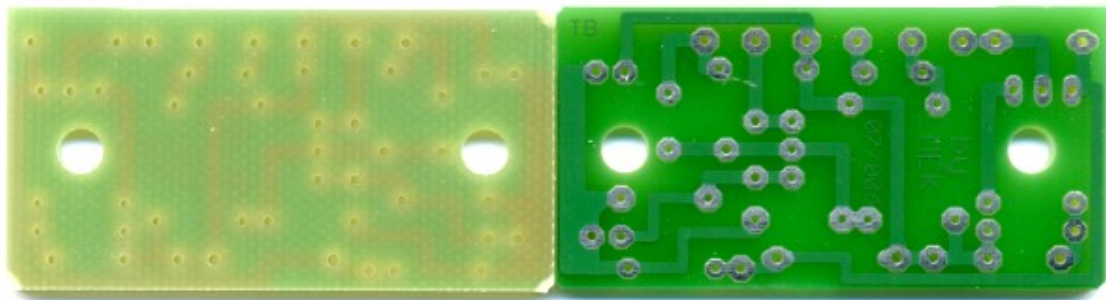


Bill of material

Quantity	Description
1	PCB Treble Booster
1	Mono jack ¼"
1	Stereo jack ¼"
1	3PDT Switch
1	LED bezel for 3mm LED
1	LED red 3mm low current
1	Potentiometer 10K-B -linear
2	Self adhesive plastic spacer 12,7mm
1	DC- jack 5.5/2.1 isolated
1	Transistor MP20/MP21D/EFT83/AC122 o.ä.
1	Resistor 100R (brown/black/black/black/brown)
2	Resistor 2K2 (red/red/black/black/brown)
1	Resistor 68K (blue/grey/black/red/brown)
1	Resistor 470K (yellow/violet/black/orange/brown)
2	Resistor 1M (brown/black/black/yellow/brown)
1	Diode 1N4001 (line katode)
1	Electrolytic 47µF/16V oder more
1	Electrolytic 100µF/16V
1	MKT capacitor 6,8nF (0.0068µF)
1	MKT capacitor 10nF (0.010µF)
1	Battery connector
1	Some wire
2	Cable fastener

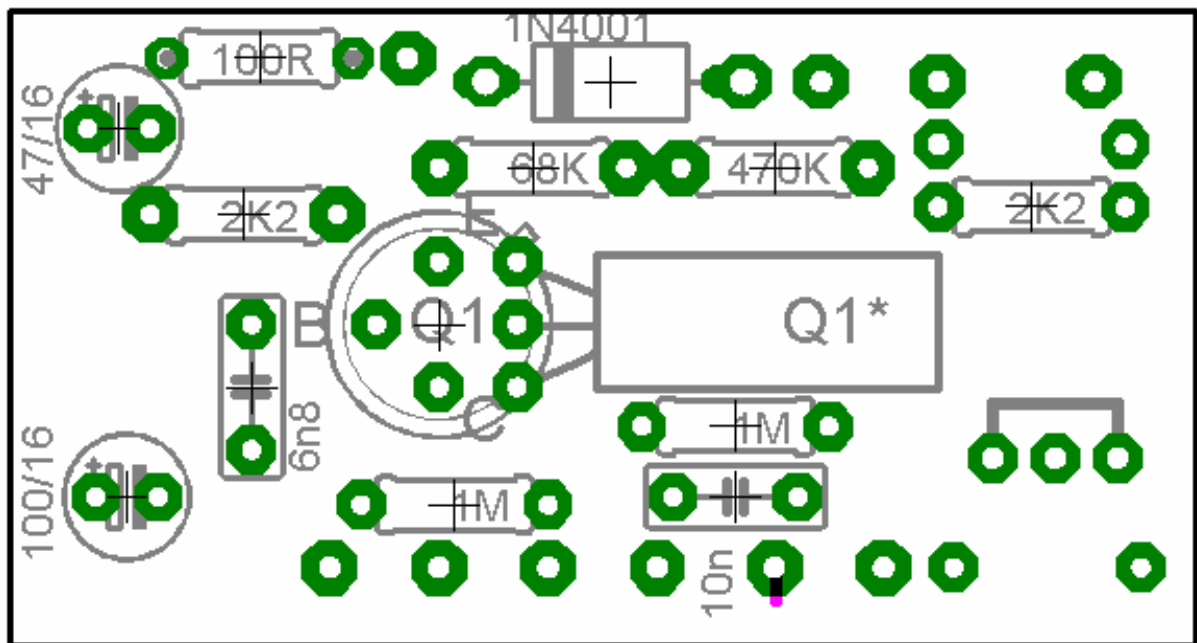
Solder tin is not delivery included in the kit

Picture of the pcb top/bottom

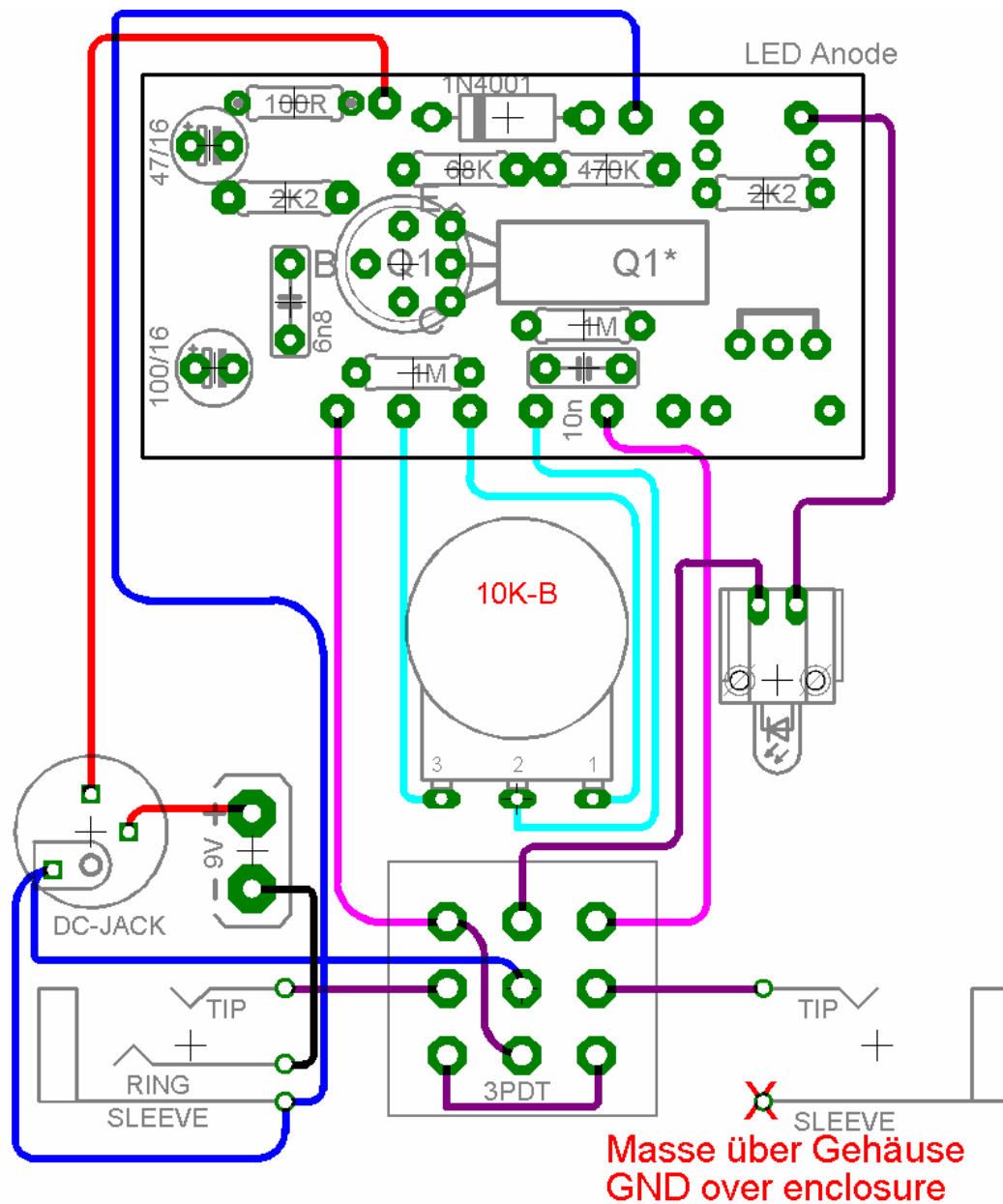


Soldering the pcb

First, the circuit board on the basis of the below of pictured Assembly plan is loaded. You should begin with the lowest elements to populate, i.e. firstly the resistors, diodes, capacitors, and to the end the transistor. When the soldering of the germanium transistor be sure that he correctly place. Clean work, in particular the execution of the solder joints should have top priority from the outset generally exclude placement and soldering errors. The overall wiring is performed then but other than as shown in the wiring diagram. The circuit board in the enclosure is mounting using the supplied self-adhesive plastic spacer left and right in the enclosure. The pot is then under the middle of the circuit board.



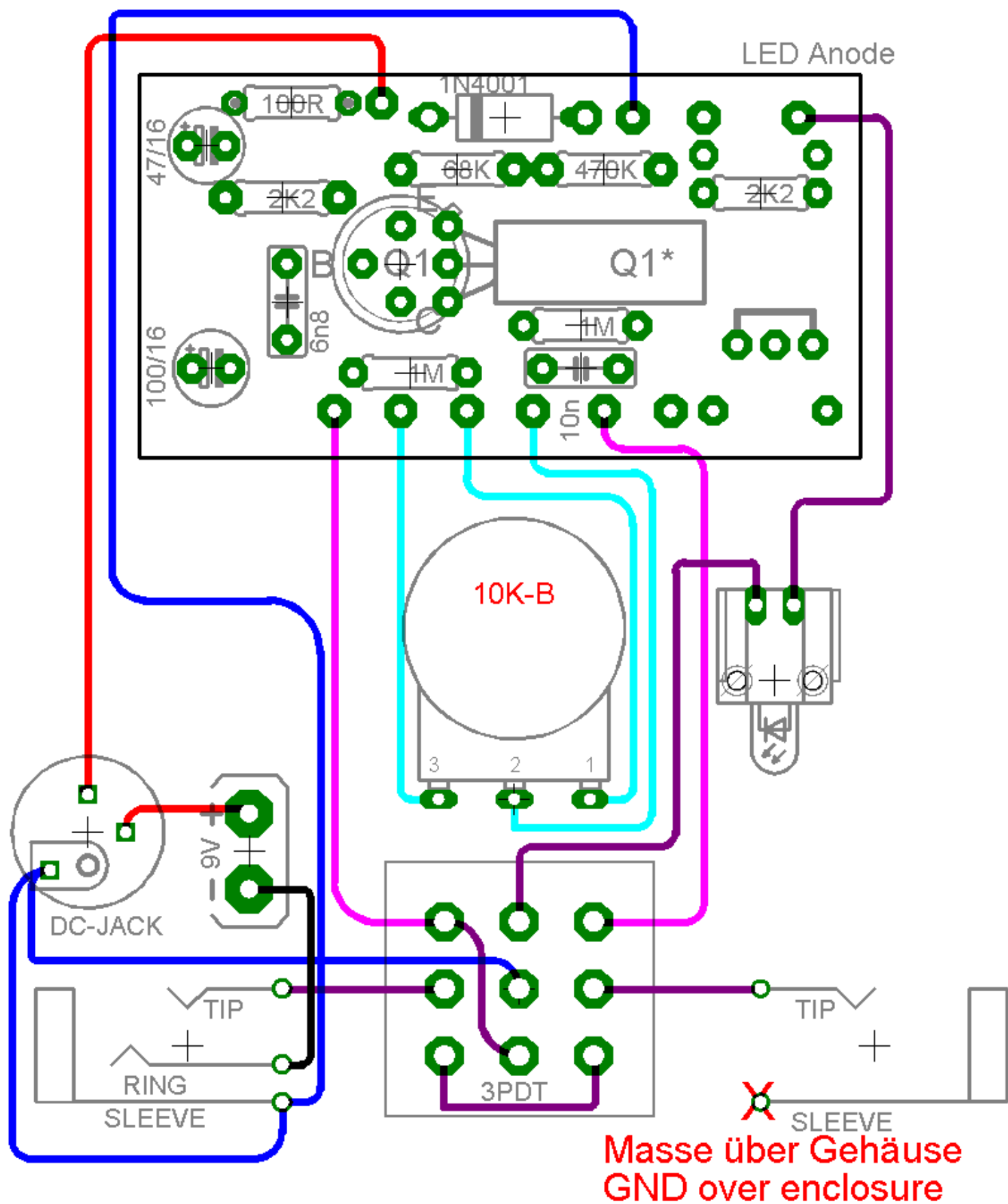
Wiring diagram

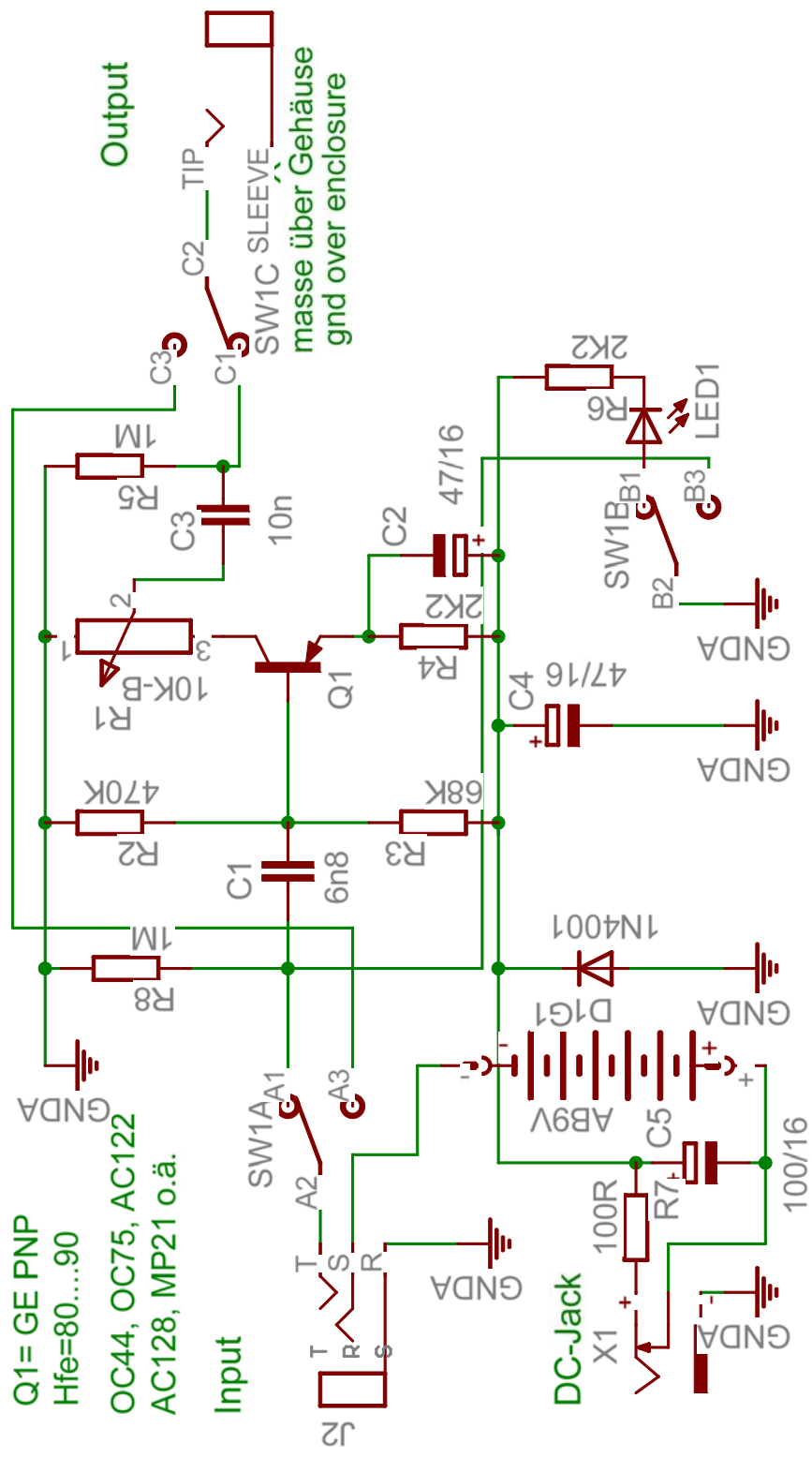


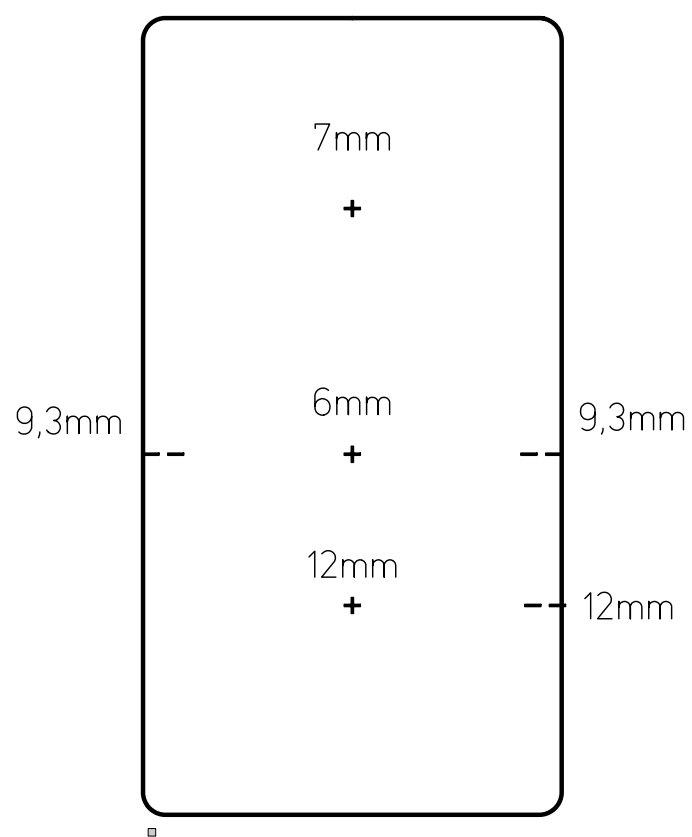
Use as enclosure a size same a 1590B or a eddystone 27134.

Drill parameters for the enclosure:

- Potentiometer : 7mm
- Audio jacks : 9.3mm
- 3PDT-Switch: 12mm
- DC-jack: 12mm
- LED bezel: 6mm







□

